

300mA High PSRR Low Dropout Voltage Regulator

General Description

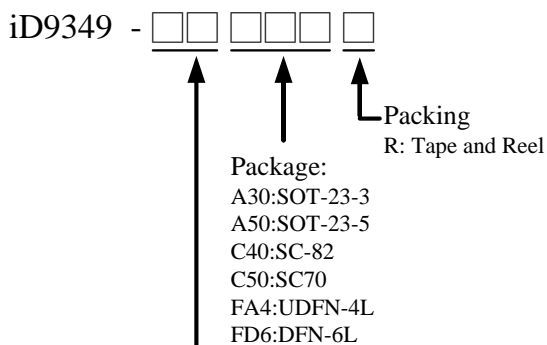
The iD9349 is a 300mA low dropout and low noise linear regulator with high ripple rejection ratio and fast turn-on time. It has fixed output voltage ranging from 1.0V to 3.3V.

The iD9349 includes a voltage reference unit, an error amplifier, resistor net for voltage setting, a current limit circuit.

These ICs perform with low dropout voltage. The iD9349 works well with low ESR ceramic capacitors, suitable for portable RF and wireless battery-powered applications with stringent space requirements and demanding performance. It also offers ultra-low noise output and has low quiescent current.

Other voltage outputs may be available. For further details, please contact an iDesyn sales or distributor.

Ordering Information



Output Voltage	Voltage Code
1.0	10
1.1	11
1.2	12
1.5	15
1.8	18
2.5	25
2.8	28
3.0	30
3.1	31
3.3	33

Features

- Ultra-Low-Noise Application
- Wide 2V to 6V Operating Range
- Quick Start-up
- Current Limiting Protection
- Low Dropout : 125mV @ 100mA, 3.3V
- High Ripple Rejection 70dB@1kHz
- Standby Current Less 0.1μA
- Low Supply Current: 25μA
- Internal Soft-Start

Applications

- Battery-Powered Equipment
- Portable Instruments
- Digital Camera
- WLAN Communication
- Hand-Held Instruments

Marking Information

For marking information, please contact our sales representative directly or through distributor around your location.

Typical Application Circuit

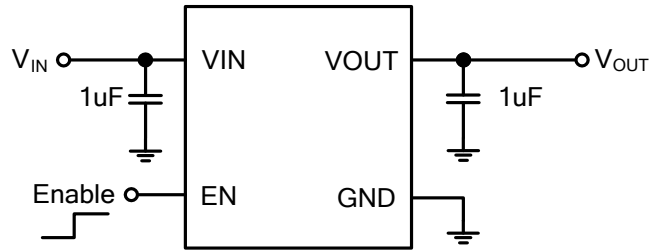


Figure 1. SC-82/UDFN-4L/DFN-6L Package

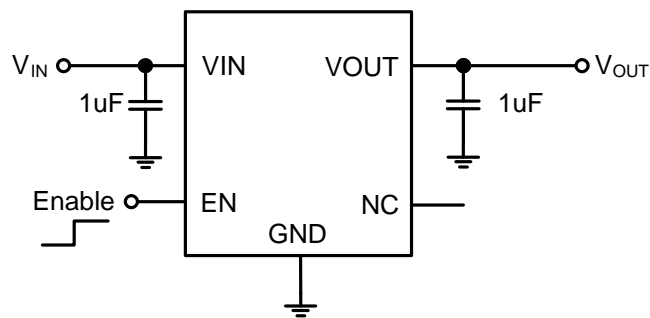


Figure 2. SC-70/SOT-23-5 Package

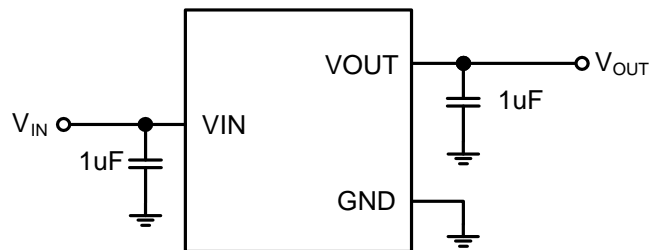


Figure 3. SOT-23-3 Package